



## ASTROGEOLOGY SCIENCE CENTER

### Set 3: Example 1-Use Perl script to make 8 average bands in methane windows

```
ast{1549}> ./vims_mwinavg.pl
```

```
Help: vims_mwinavg.pl [-h] ~or~ [-dir=S02_T0]
```

```
where
```

-h	Help, prints documentation only
-dir=	Process all *.ir.cub files in a directory <required or> (shortcut: -d=)
-list=	List of input cubes <required or> (shortcut: -l=)
-from=	Single Image <required or> (shortcut: -f=)
-spice	[default=no spiceinit] this switch includes spiceinit
-simp	Generate individual Simp, default res/lat/lon (Optional for lev1 input)
-nojpg	Do not create jpg color of Simp images(Optional for lev1 input; use with -simp)
-map	Generate individual Simps at same res/global range (Optional for lev1 input)
-grid	Generate a lat/lon grid for Map file (Optional for lev1 input; use with -map)

Hyphens are REQUIRED

-dir, -list or -from= one of these parameters is required for specified input

\*Input is required to be calibrated IR cube (if no spiceinit applied; enter -spice)

\*Input can be a level1 or level2 image

\*\*\*All output files go to current directory and will be overwritten if they already exist

```
Command: vims_mwinavg.pl -dir=S02_T0 -simp -map ~or~ vims_mwinavg.pl -d=S02_T0 -simp -map
```



## ASTROGEOLOGY SCIENCE CENTER

### Set 3: Example 1-Use Perl script to make 8 average bands in methane windows

in.lis

```
C1514302573_1.ir.cub  
C1525116645_1.ir.cub  
C1525117030_1.ir.cub  
C1525117426_1.ir.cub  
C1525117858_1.ir.cub  
C1525118253_1.ir.cub  
C1525118649_1.ir.cub
```

➤ `./vims_mwinavg.pl -list=in.lis -spice -map -grid`



## ASTROGEOLOGY SCIENCE CENTER

### Set 3: Example 1-Use Perl script to make 8 average bands in methane windows in\_vims\_mwinavg.log

-----  
Note worthy activity encountered during VIMS methane band processing  
Date: Tue Jun 26 00:21:26 2012  
-----

List Input: in.lis

Bands selected for averaging:

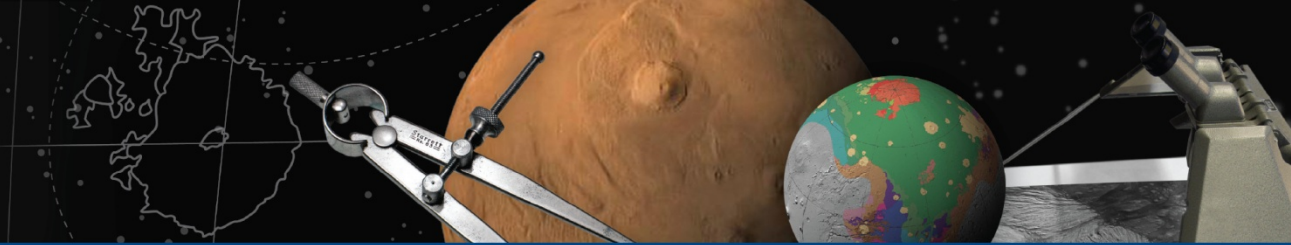
p1=+4, p2=+12-13, p3=+25-26, p4=+42-45, p5=+69-73, p6=+110-112, p7=+116-117, p8=+243-253

RGB Bands for Jpeg files:

Red=+5 Green=+4 Blue=+3

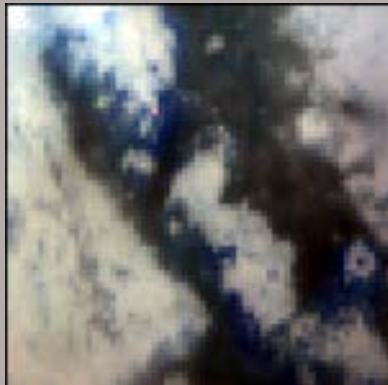
Pixel/Deg Constant: 44942

```
[if px/dg >= 0 and px/dg < 2 => Scale=4]
[if px/dg >= 2 and px/dg < 4 => Scale=8]
[if px/dg >= 4 and px/dg < 8 => Scale=16]
[if px/dg >= 8 and px/dg < 16 => Scale=32]
[if px/dg >= 16 and px/dg < 32 => Scale=64]
[if px/dg >= 32 and px/dg < 64 => Scale=128]
[if px/dg >= 64 and px/dg < 128 => Scale=256]
[if px/dg >= 128          => Scale=512]
```



**ASTROGEOLOGY SCIENCE CENTER**

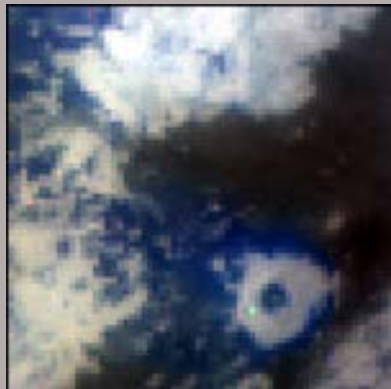
C1514302573\_1.ir.cub





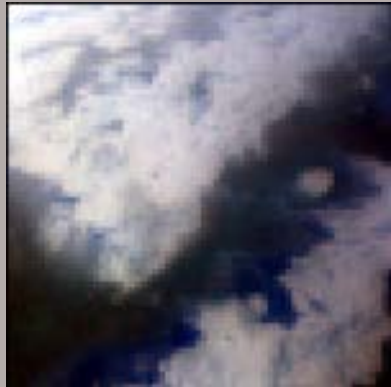
**ASTROGEOLOGY SCIENCE CENTER**

C1525118253\_1.ir.cub

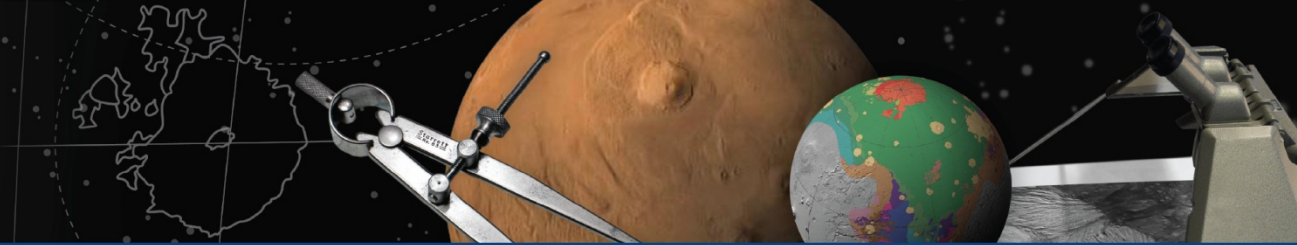




**ASTROGEOLOGY SCIENCE CENTER**

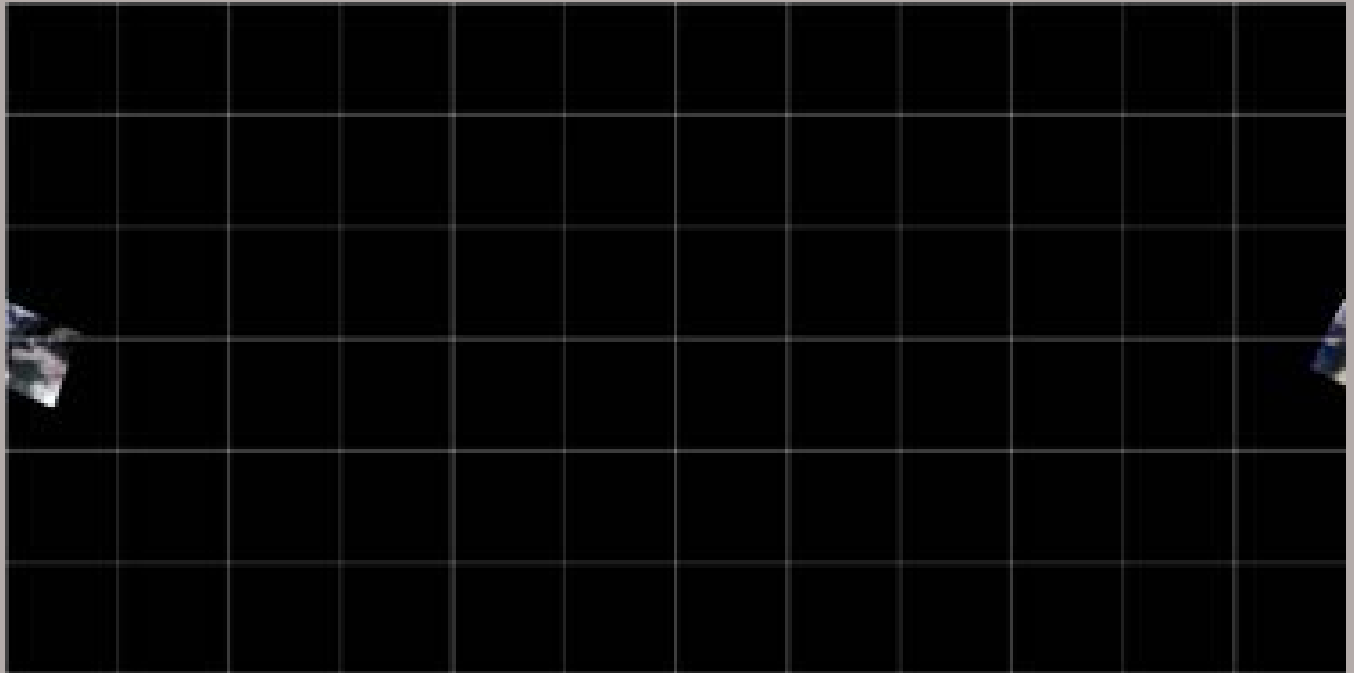
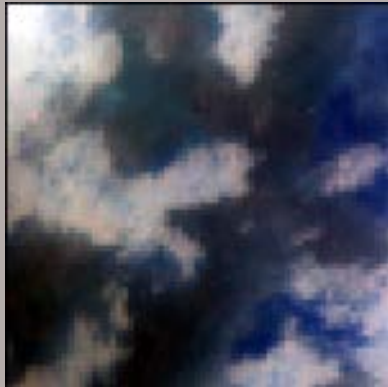






**ASTROGEOLOGY SCIENCE CENTER**

C1525117858\_1.ir.cub





**ASTROGEOLOGY SCIENCE CENTER**

C1525117426\_1.ir.cub

